



AURA

BYDLENÍ STATENICE



VILLA POPULAR

CL9 | 5+kk | 155 m²

pozemek 617 m²

dispozice
disposition | **5+kk**

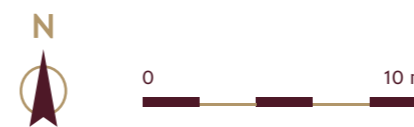
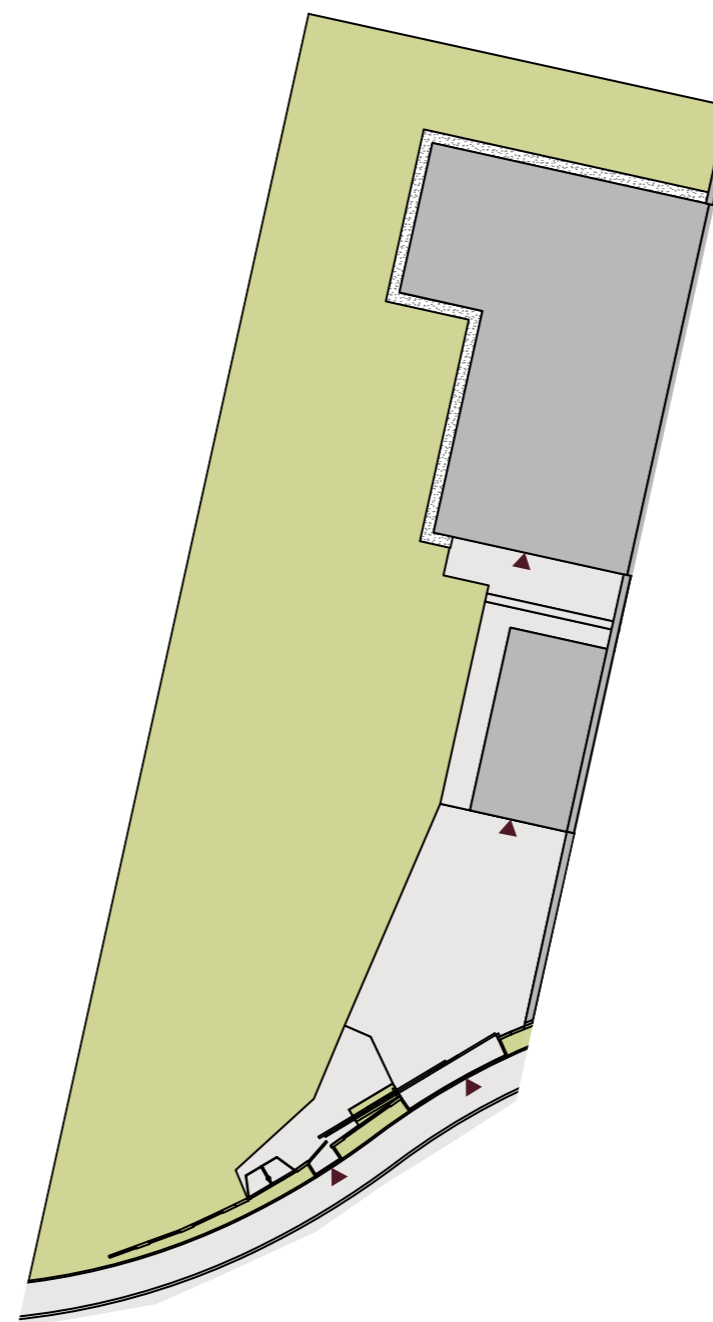
užitná plocha domu
usable floor area | **154,5 m²**

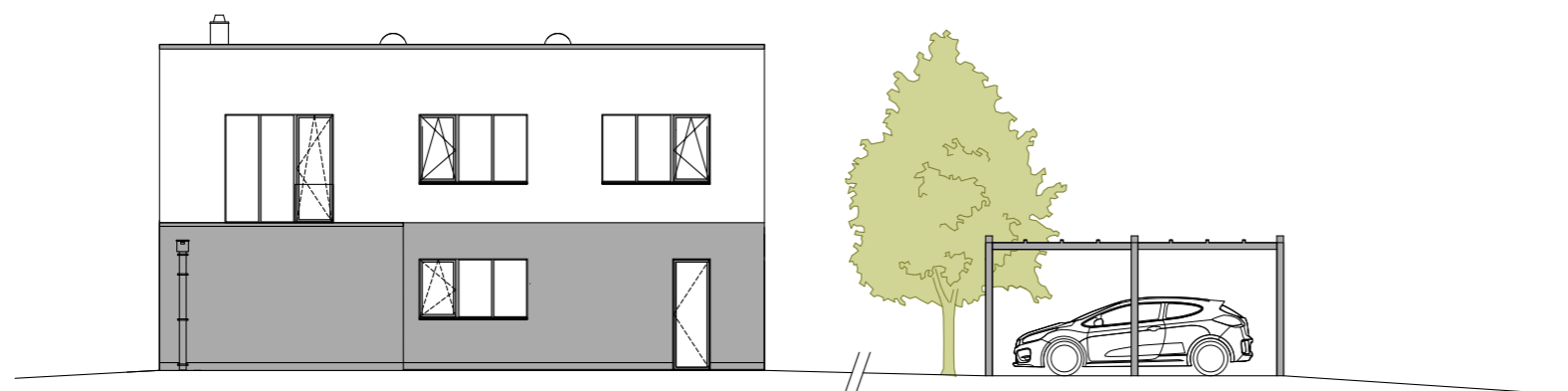
zastavěná plocha
built-up area | **109,3 m²**

pozemek
plot | **617 m²**

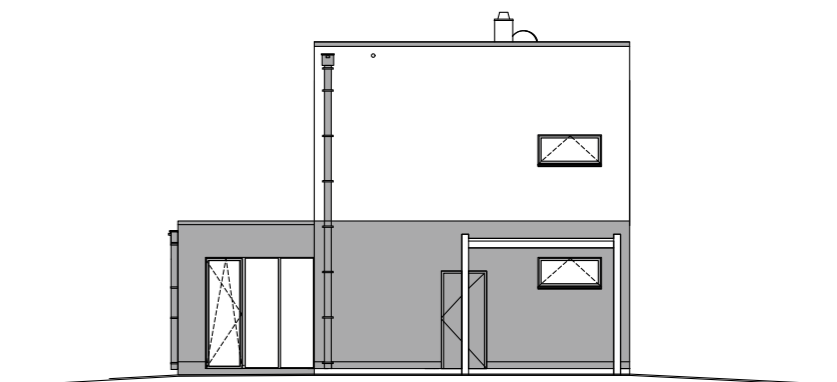
zahrada
garden | **507,7 m²**

SITUACE – 1. ETAPA

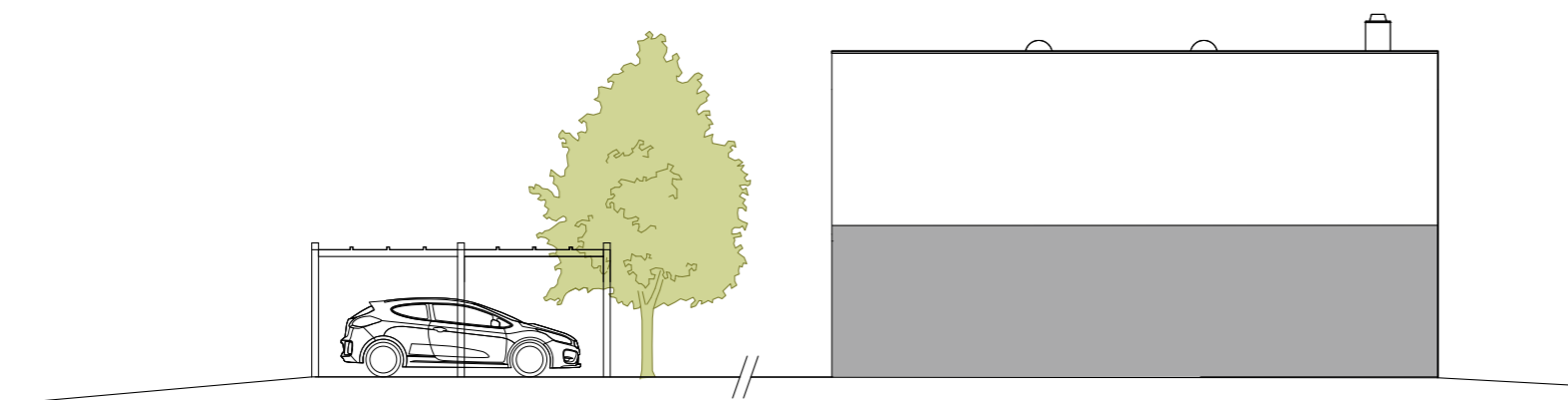




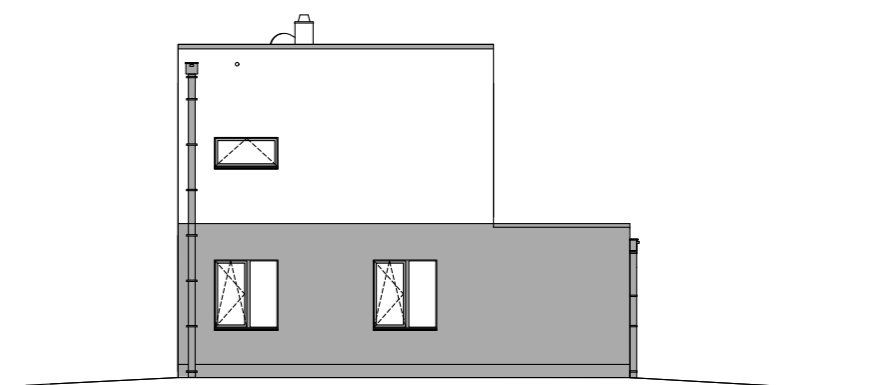
Západní pohled | Western view



Jižní pohled | Southern view



Východní pohled | Eastern view



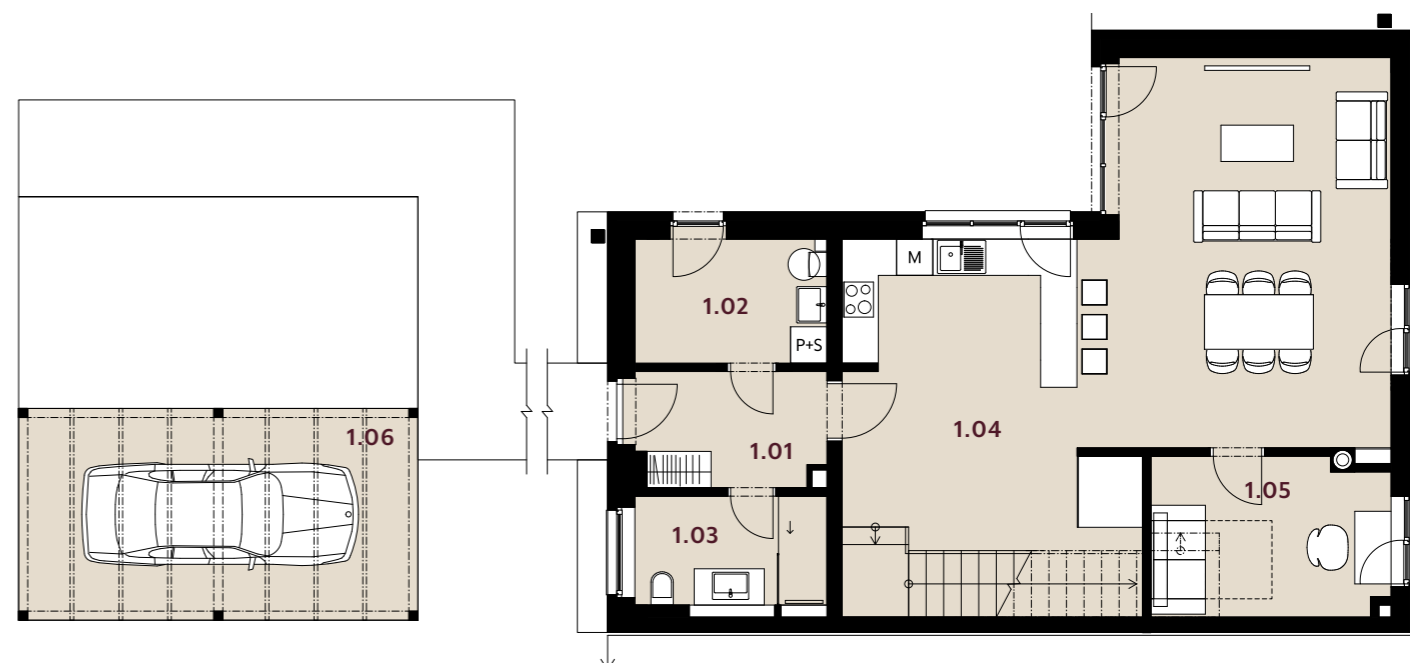
Severní pohled | Northern view

VILLA POPULAR

CL9 | 5+kk

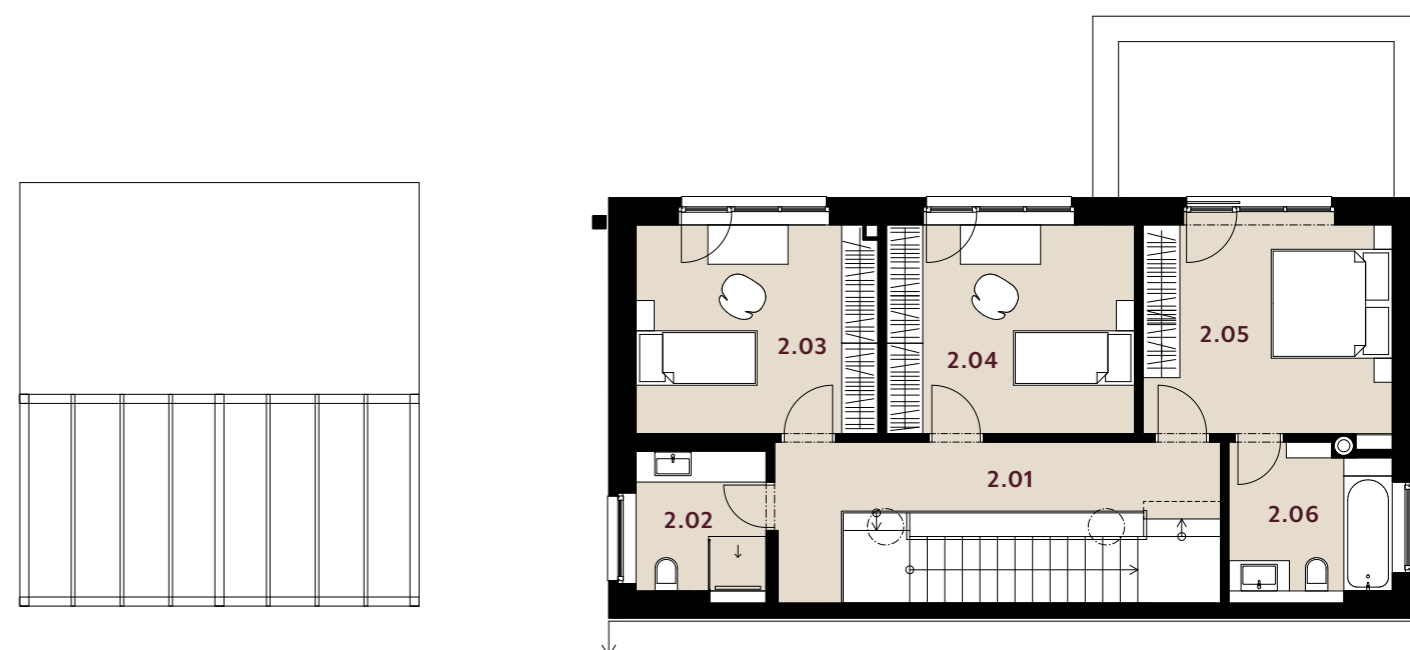
1.NP | GROUND FLOOR

1.01	zádveř vestibule	6,4 m ²
1.02	technická místnost technical room	6,8 m ²
1.03	koupelna bathroom	6,2 m ²
1.04	obývací pokoj s kuchyní living room with kitchen	59,2 m ²
1.05	pracovna workroom	10,2 m ²
UŽITNÁ PLOCHA 1.NP USABLE AREA GROUND FLOOR		88,8 m²
1.06	parkovací stání (pergola) parking space (pergola)	23,1 m ²



2.NP | 1st FLOOR

2.01	chodba corridor	10,8 m ²
2.02	koupelna bathroom	5,2 m ²
2.03	ložnice bedroom	13,8 m ²
2.04	ložnice bedroom	14,1 m ²
2.05	hlavní ložnice master bedroom	15,0 m ²
2.06	koupelna bathroom	6,8 m ²
UŽITNÁ PLOCHA 2.NP USABLE AREA 1st FLOOR		65,7 m²



UŽITNÁ PLOCHA CELKEM TOTAL USABLE AREA		154,5 m²
PODLAHOVÁ PLOCHA CELKEM TOTAL FLOOR AREA		171,3 m²

