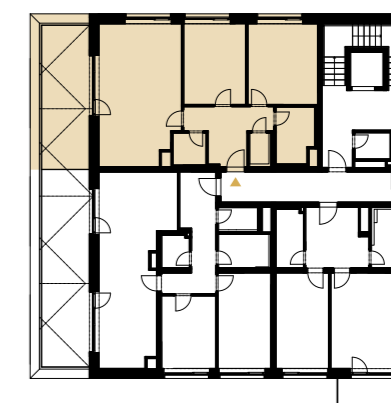
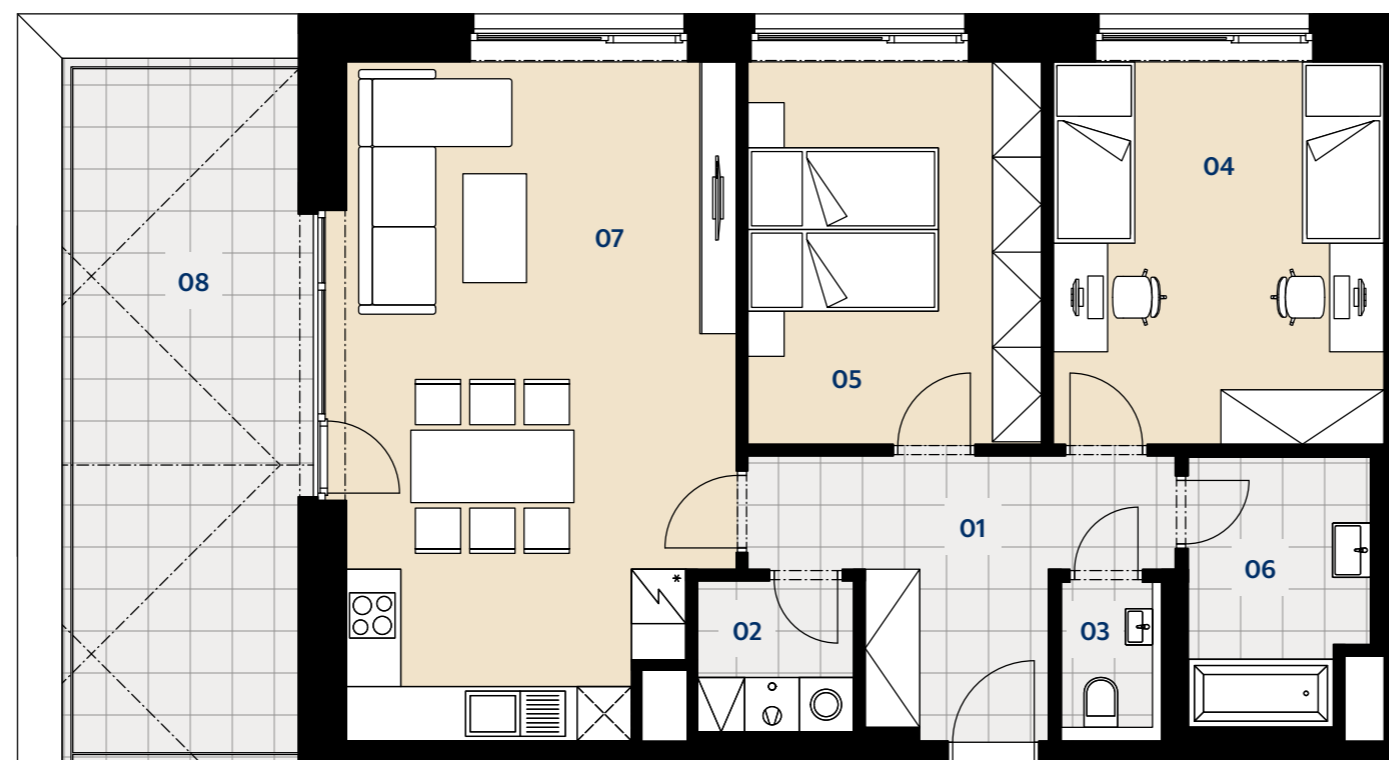


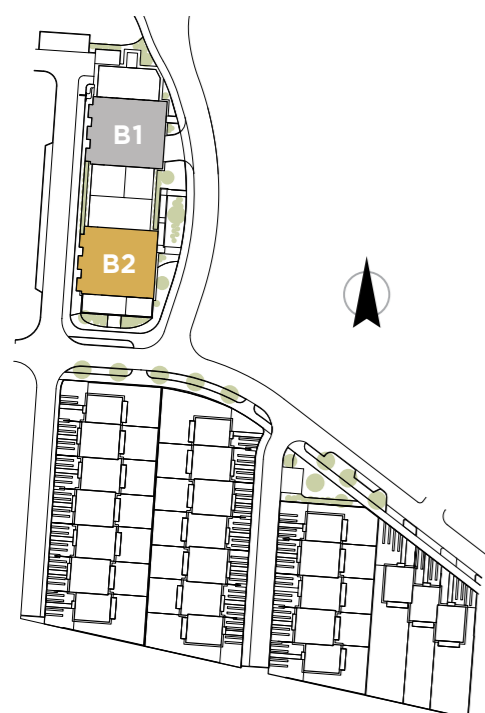
BYTOVÝ DŮM B2

byt 241 | 4.NP | 3+kk | 88,3 m²

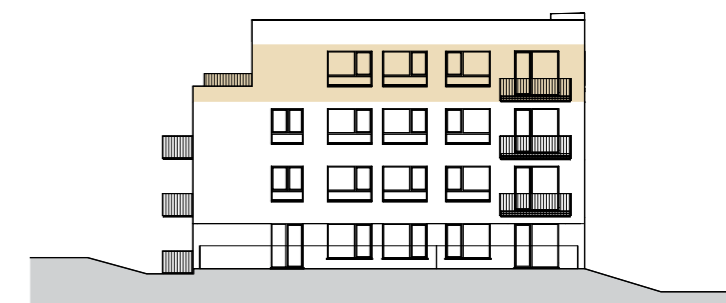
01	Chodba Corridor	10,1 m ²
02	Komora Utility room	2,9 m ²
03	WC Toilet	2,1 m ²
04	Pokoj Room	16,0 m ²
05	Ložnice Bedroom	14,2 m ²
06	Koupelna Bathroom	5,6 m ²
07	Obývací pokoj s kuchyní Living room & kitchen	32,0 m ²
OBYTNÁ PLOCHA CELKEM TOTAL LIVING AREA		82,9 m²
PODLAHOVÁ PLOCHA CELKEM TOTAL FLOOR AREA		88,3 m²
08	Terasa Terrace	20,7 m ²



4.NP | 3rd floor



Situace etapy | Phase layout



Jižní pohled | Southern view