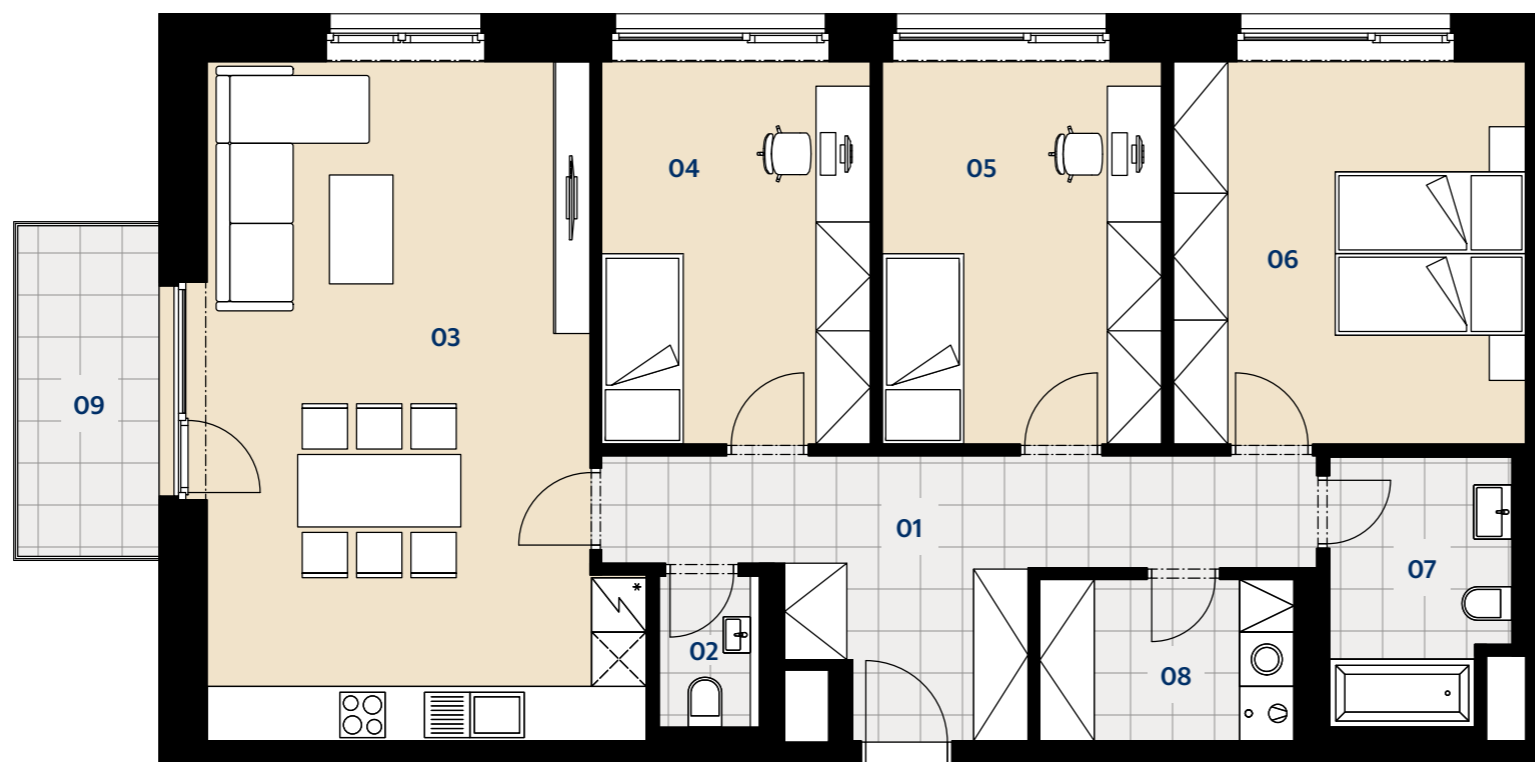


## BYTOVÝ DŮM B2

byt 221 | 2.NP | 4+kk | 111,7 m<sup>2</sup>



01	Chodba   Corridor	14,8 m <sup>2</sup>
02	WC   Toilet	1,9 m <sup>2</sup>
03	Obývací pokoj s kuchyní   Living room & kitchen	33,8 m <sup>2</sup>
04	Pokoj   Room	13,1 m <sup>2</sup>
05	Pokoj   Room	13,6 m <sup>2</sup>
06	Ložnice   Bedroom	17,0 m <sup>2</sup>
07	Koupelna   Bathroom	5,6 m <sup>2</sup>
08	Komora   Utility room	5,2 m <sup>2</sup>

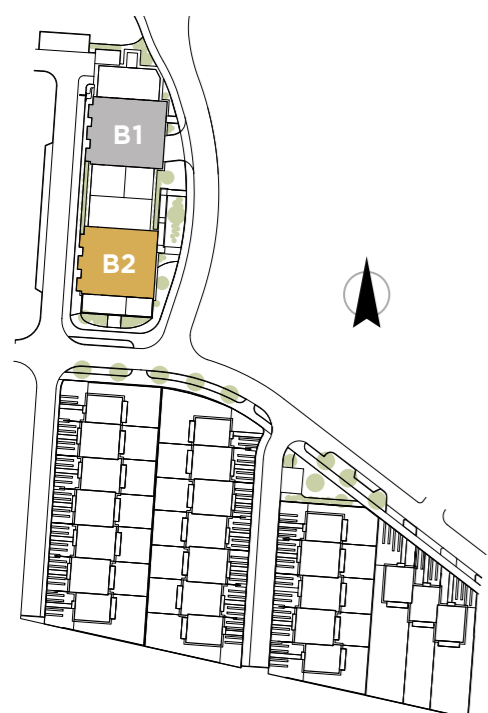
**OBYTNÁ PLOCHA CELKEM | TOTAL LIVING AREA** 105,0 m<sup>2</sup>

**PODLAHOVÁ PLOCHA CELKEM | TOTAL FLOOR AREA** 111,7 m<sup>2</sup>

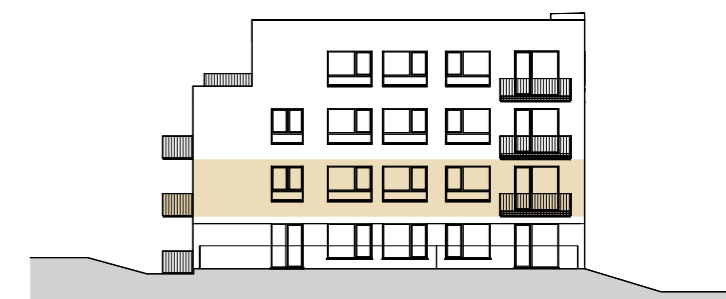
09 Balkon | Balcony 6,2 m<sup>2</sup>



2.NP | 1<sup>st</sup> floor



Situace etapy | Phase layout



Jižní pohled | Southern view